

TOPIC PLANNER

Topic: Exotic Animals

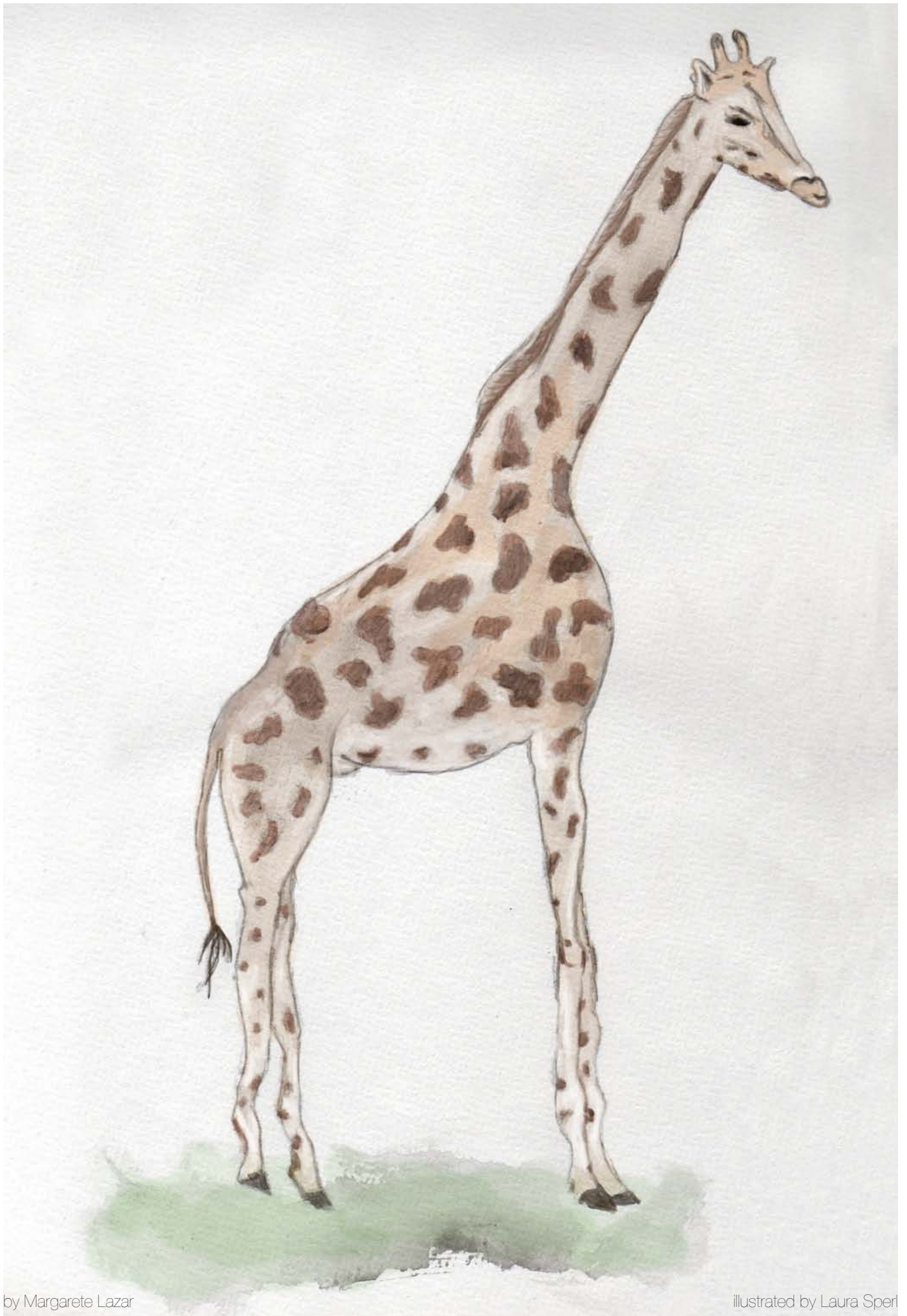
Language content:

Core vocabulary	elephant, tiger, giraffe, panda, monkey, habitat, skin, fur, eat, drink
Core structures	What is it? It's a... Where does it live? It lives in....
Extension vocabulary	savannas, jungle, forest, bamboo, trunk, smooth, ...
Extension structures	What does it look like? It has got.... What does it eat? It eats..., it drinks...

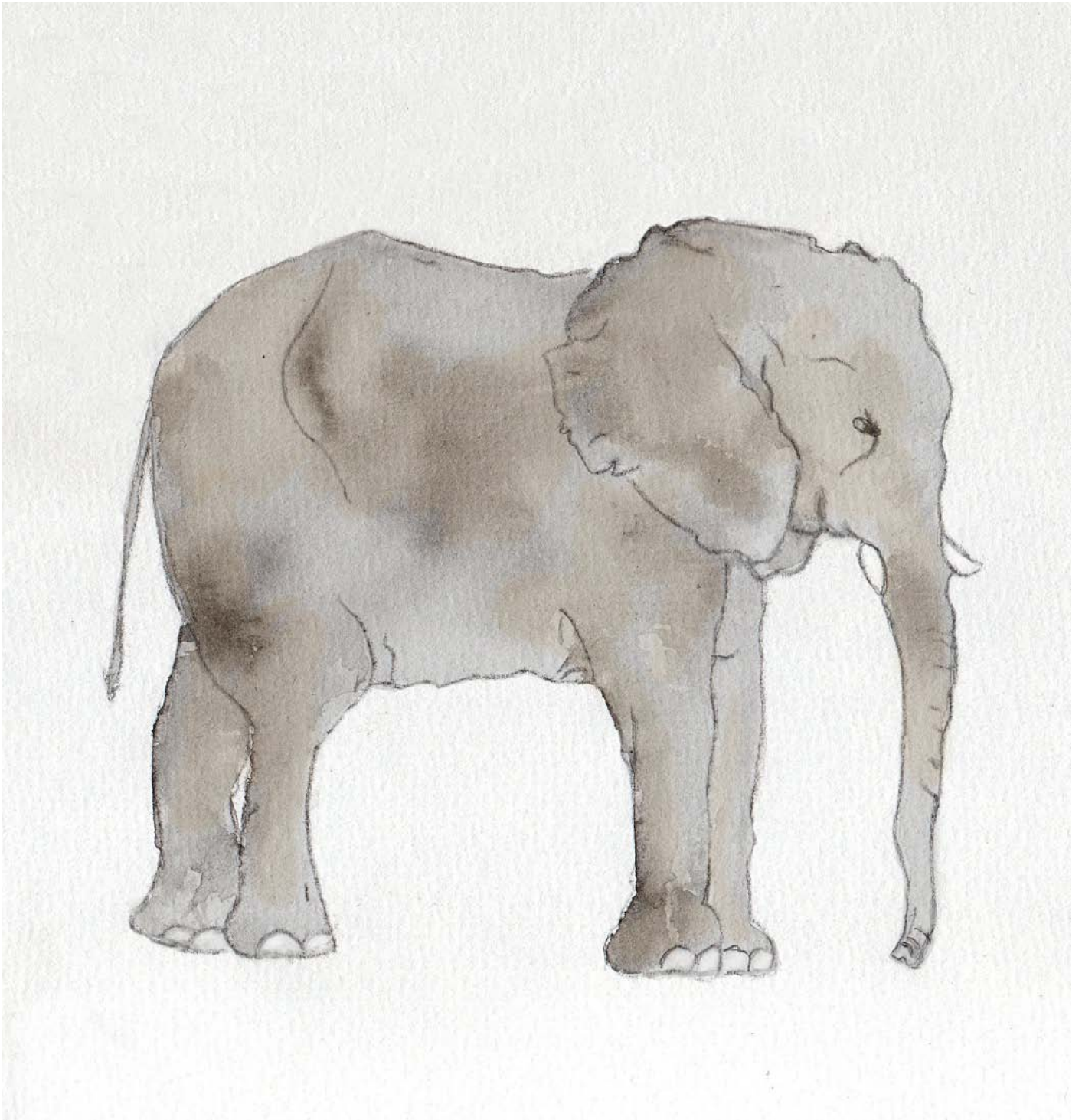
Materialien: Exotic Animals

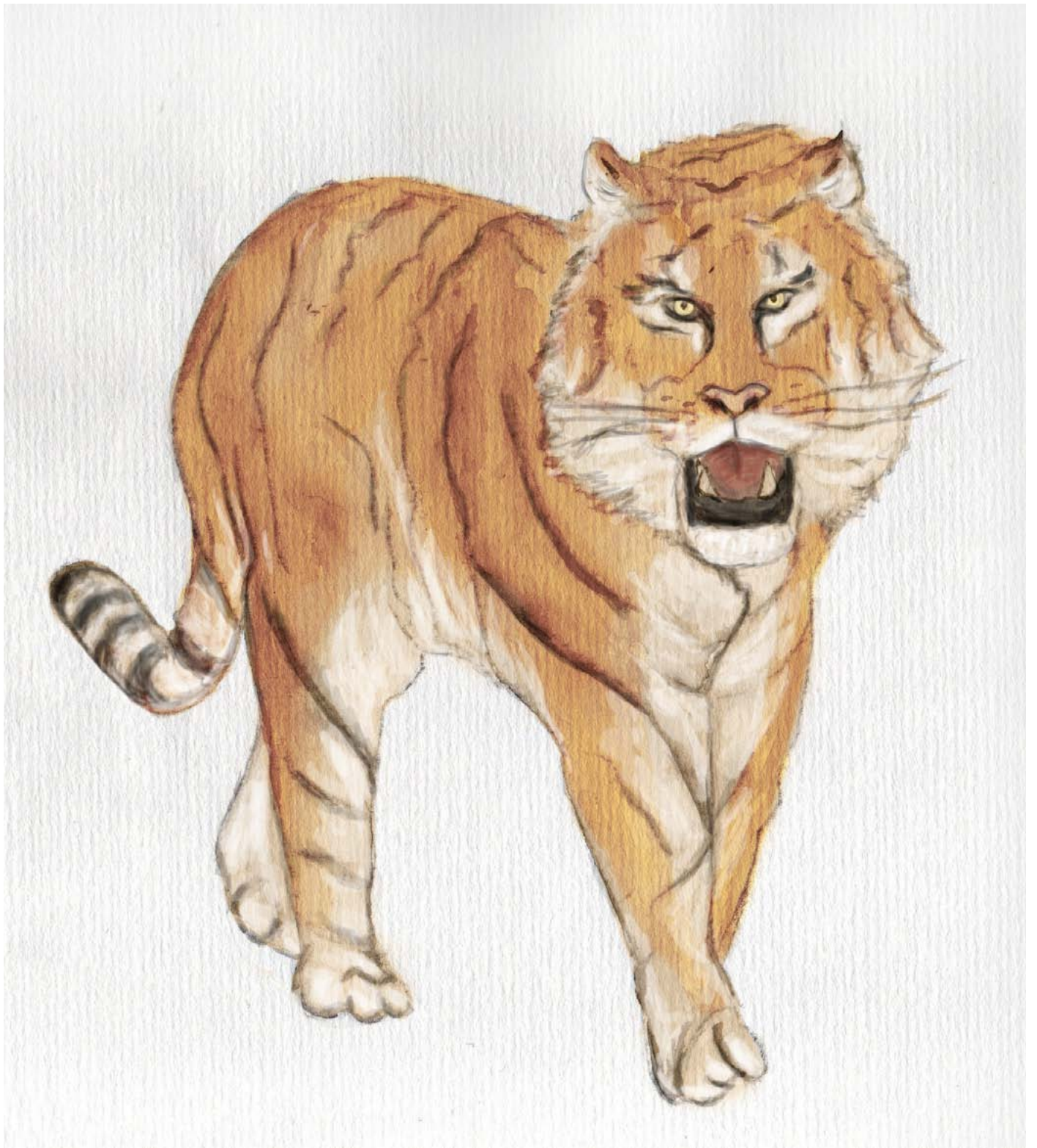
<p>01</p> <p>Je eine Flashcard A 4 zu den Tieren des Core Vocabulary</p>	<p>Einsatz bei der Erarbeitung des Wortschatzes</p> <ul style="list-style-type: none"><input checked="" type="checkbox"/> Vorzeigen <i>What is it? It's a....</i><input checked="" type="checkbox"/> An der Tafel umgedreht befestigen: <i>Where is...?</i>
<p>02</p> <p>Blätter mit jeweils sechs quadratischen Bildchen zu den Tieren</p>	<p>Einsatz für spielerisches Wiederholen:</p> <ul style="list-style-type: none"><input checked="" type="checkbox"/> Memory <i>This is... Where is...?</i><input checked="" type="checkbox"/> Ratespiele <i>Have you got the....?</i>
<p>03</p> <p>Je eine Flashcard A 4 mit den Habitats</p>	<p>Einsatz bei Offenem Lernen und Lernstationen, Vorbereitung für die Arbeit mit den Easy Readers</p>
<p>04</p> <p>5 Booklets - Easy Readers zu den einzelnen Tieren</p>	<p>Genauere Angaben unter dem Punkt Easy Readers</p>





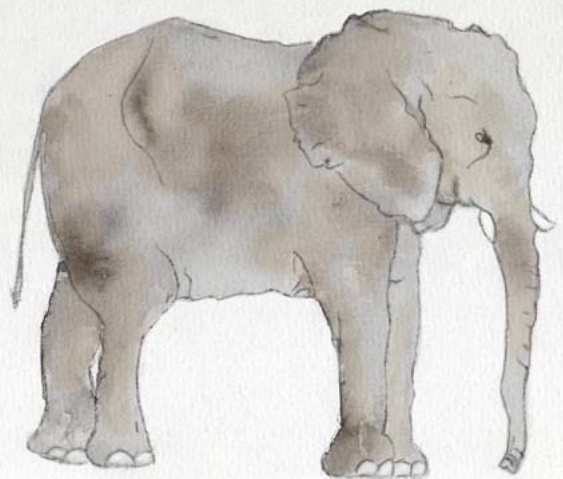
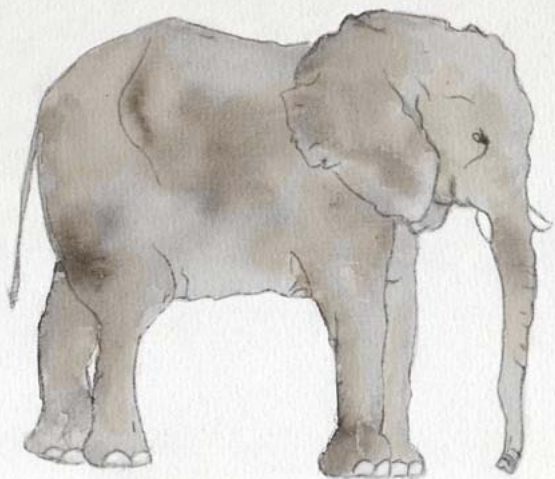
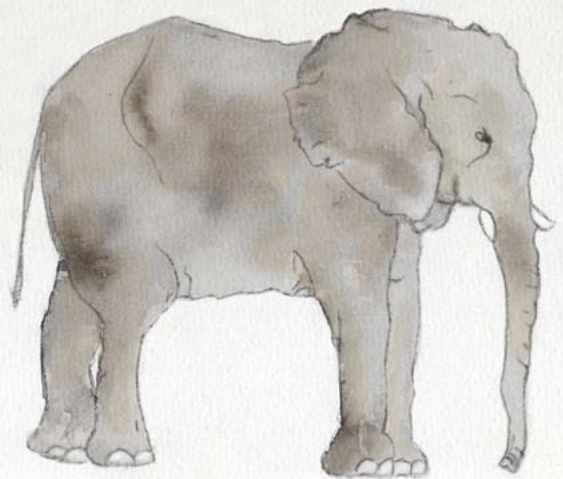
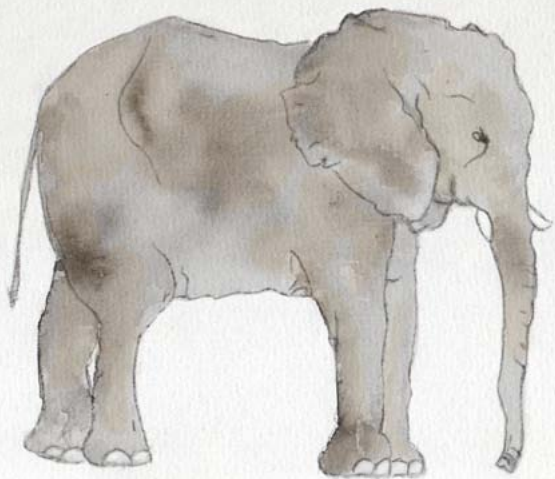
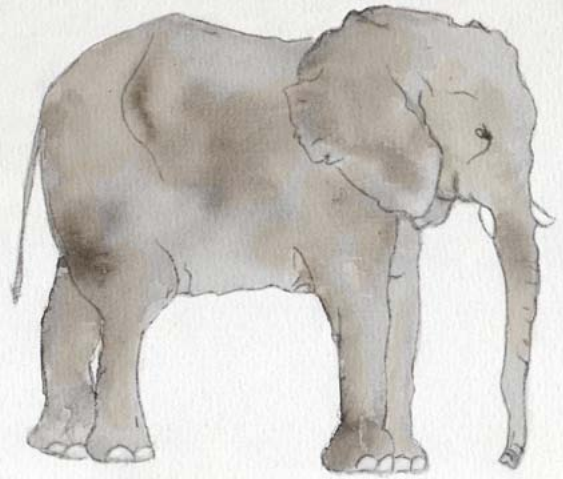
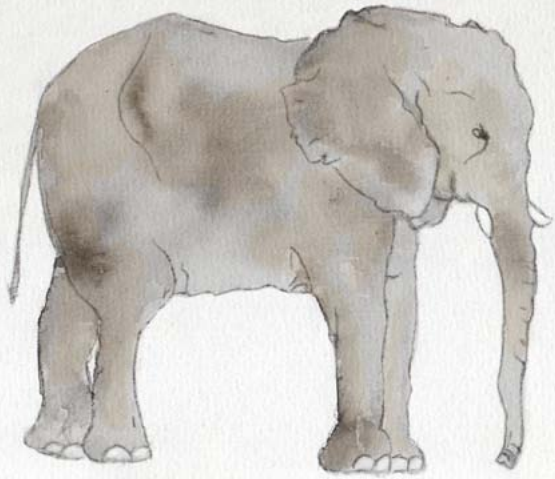


















Illustrated by Laura Sperl

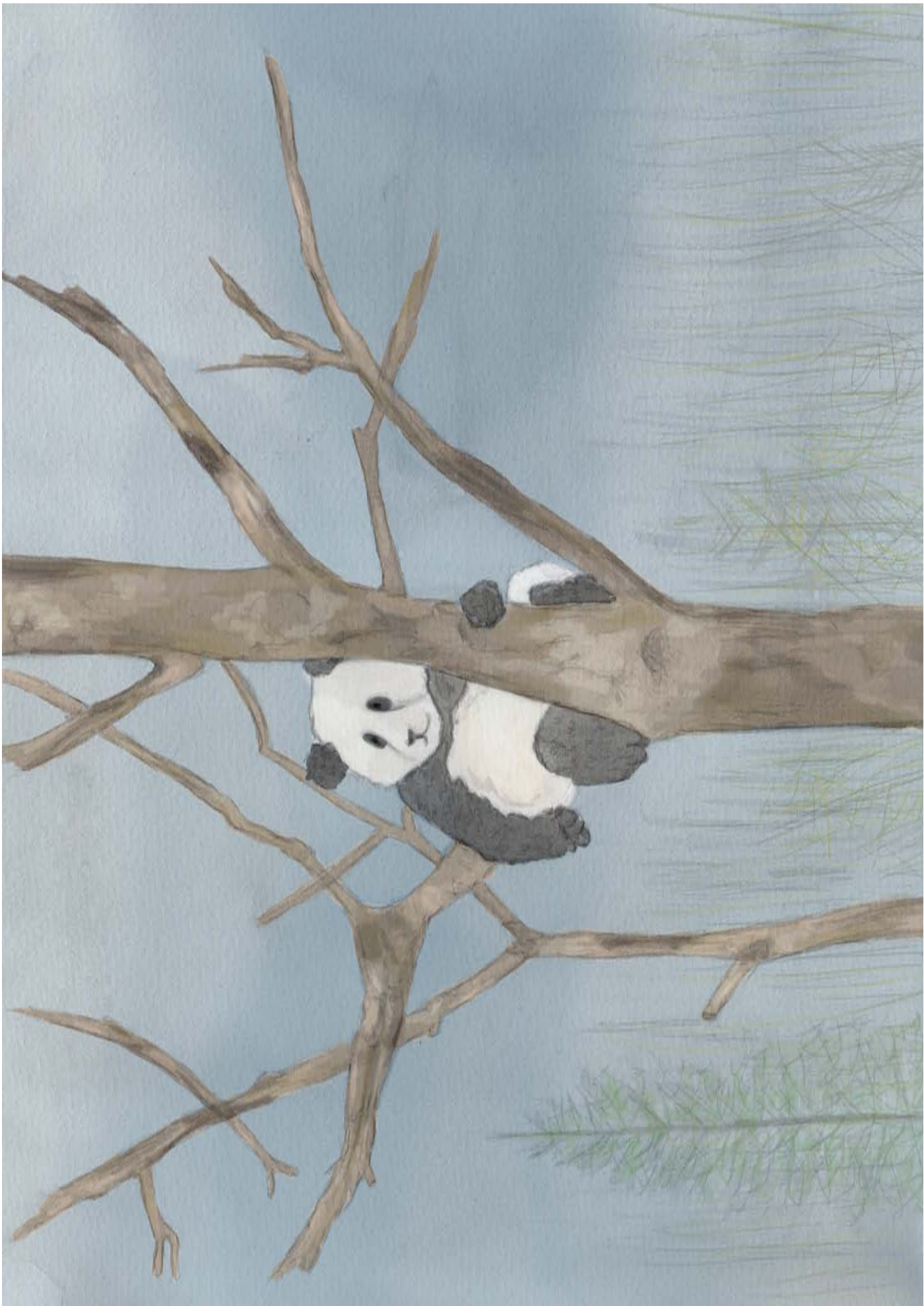
by Margarete Lazar



by Margarete Lazar

illustrated by Laura Sperl

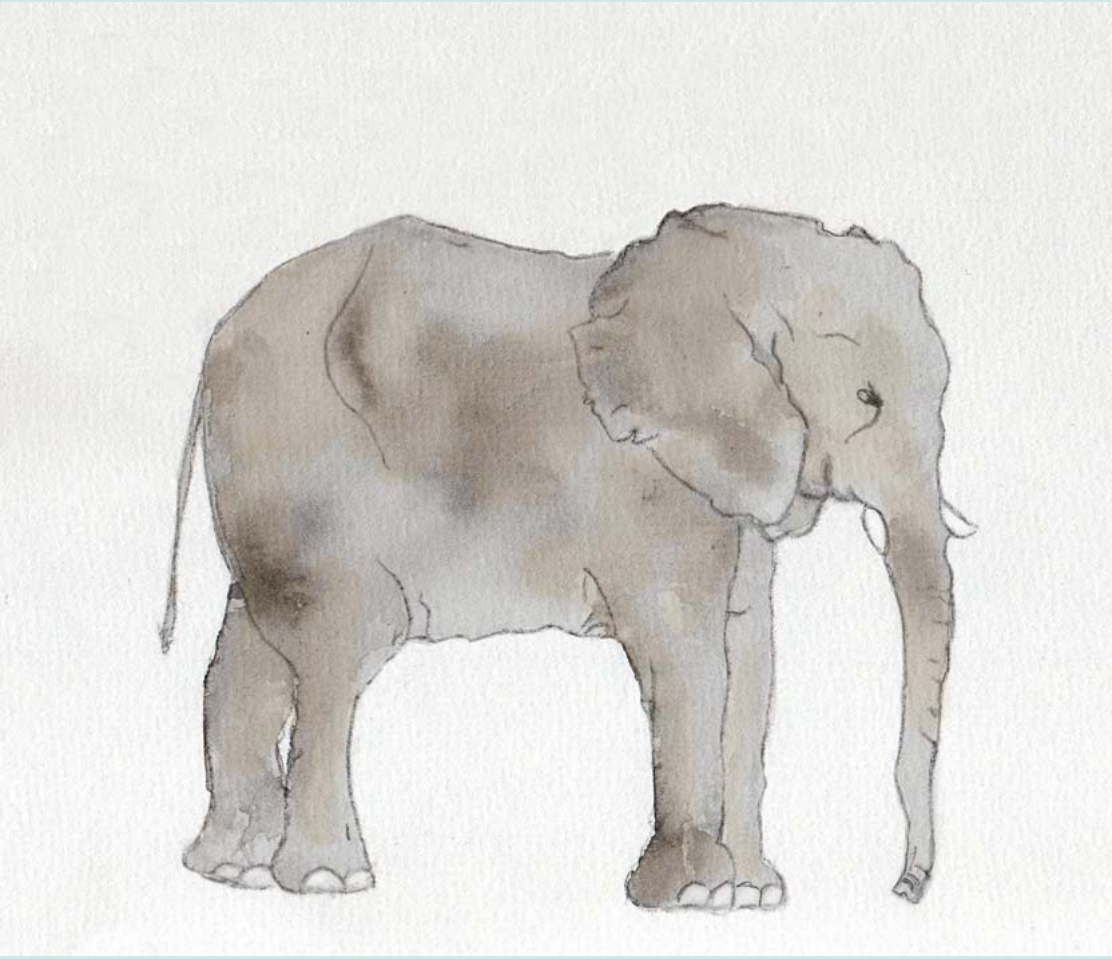




by Margarete Lazar

illustrated by Laura Sperl

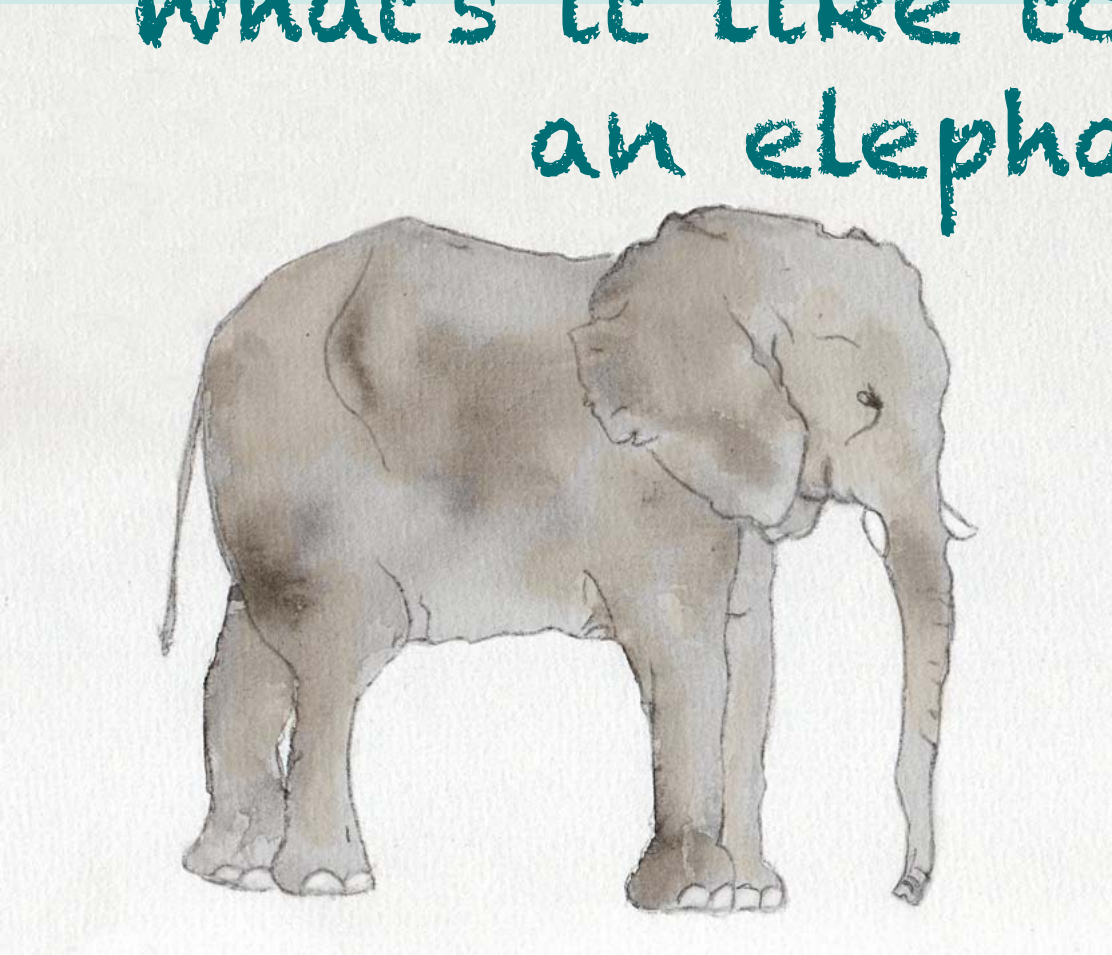




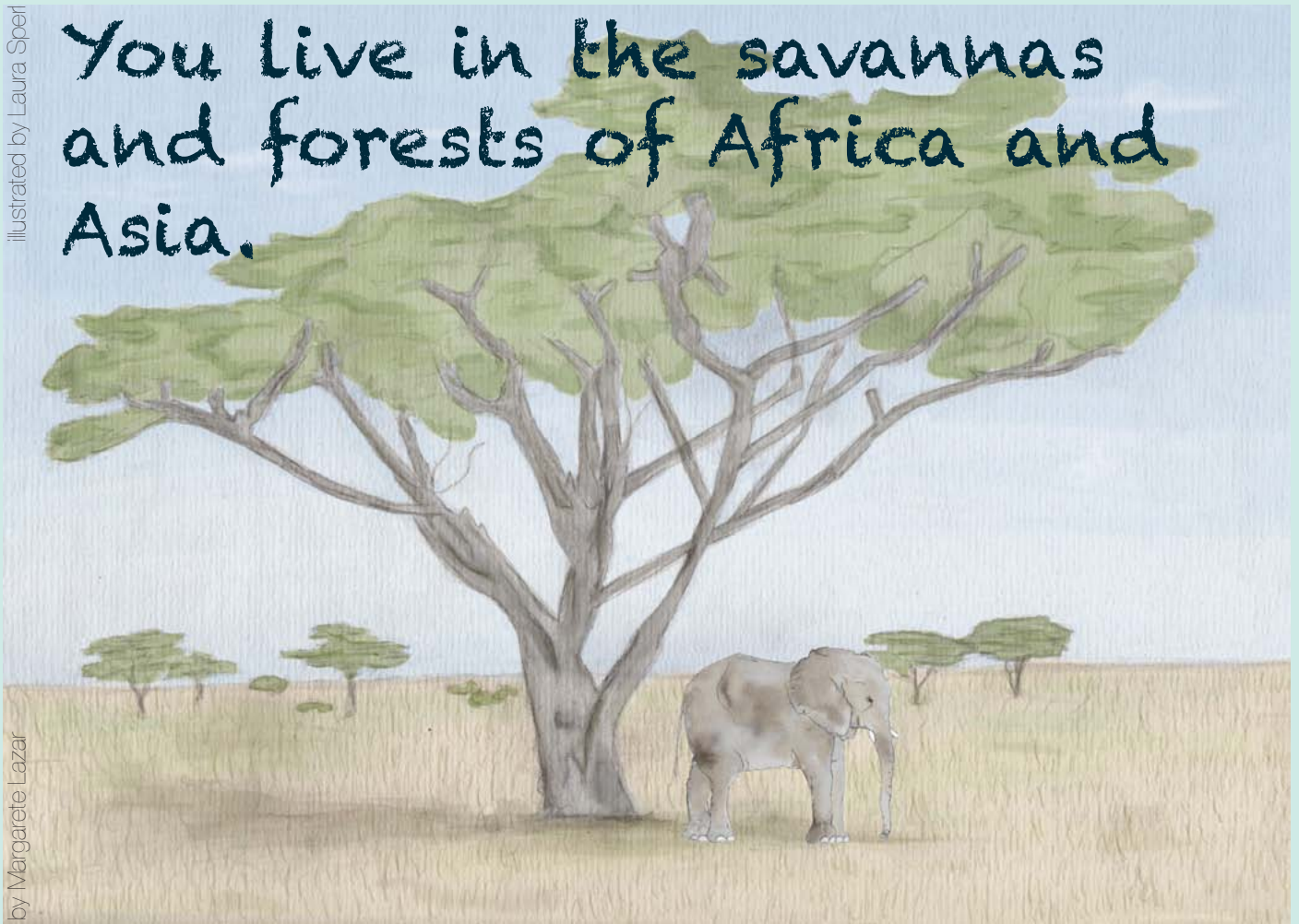
400
d

you
up to
es of
water.

What's it like to be
an elephant?



You live in the savannas
and forests of Africa and
Asia.

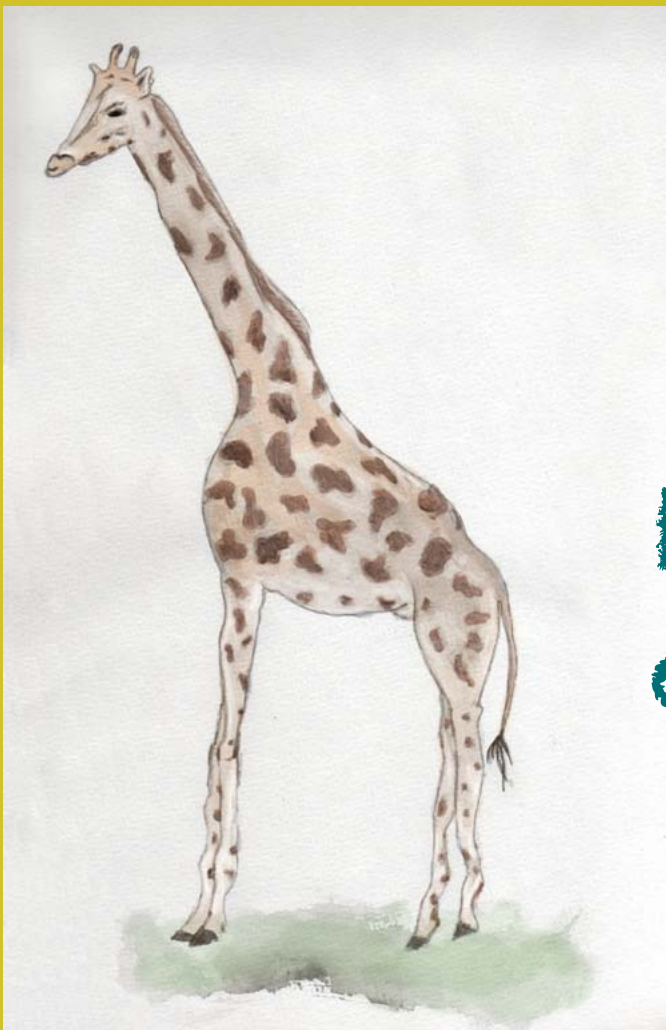


Your skin is
up to three
centimetres
thick.

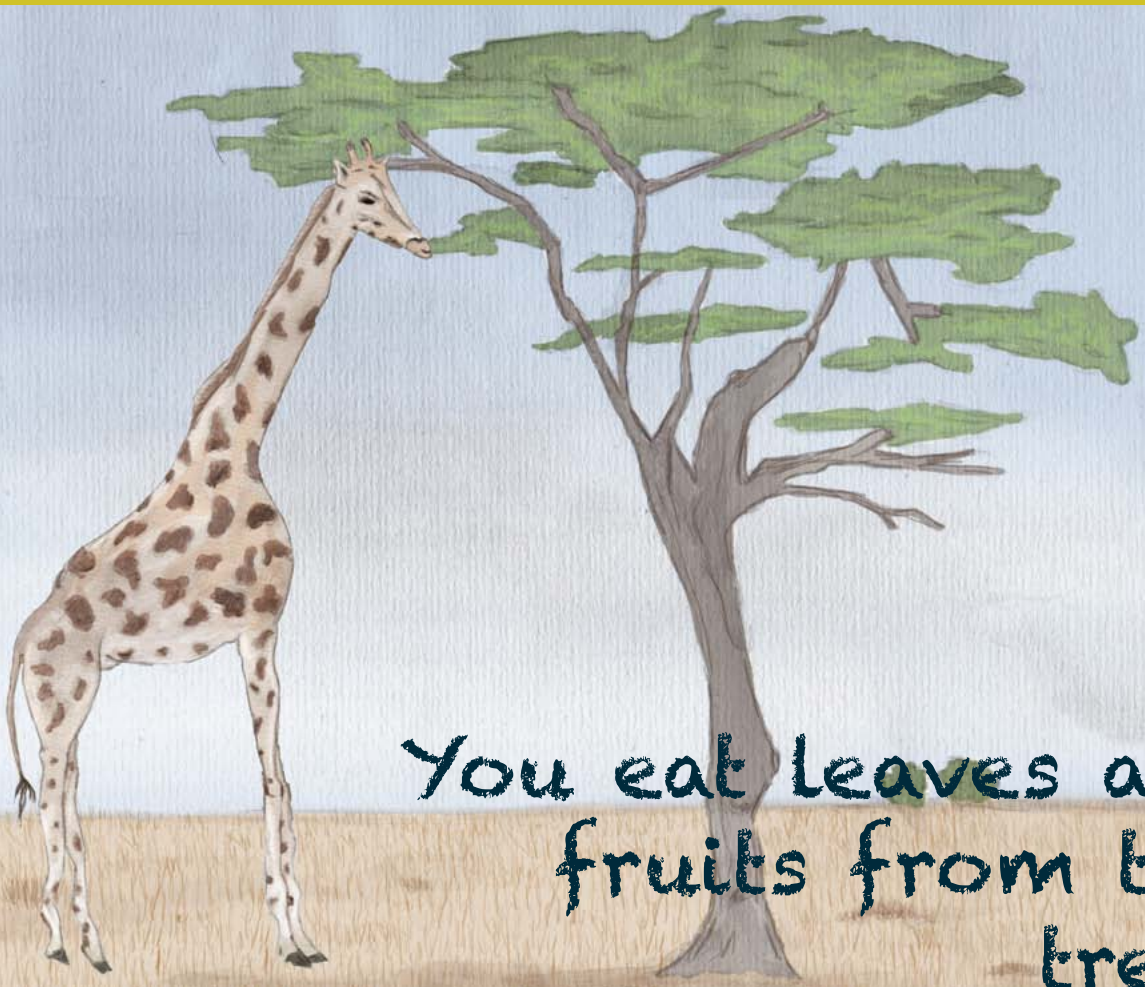




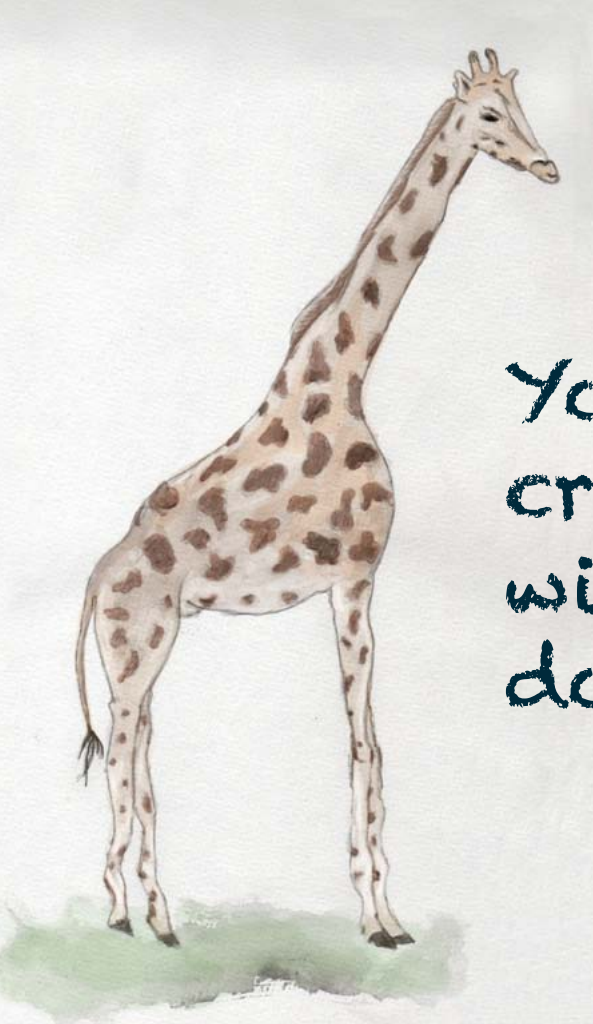
You live in the grasslands
of Africa.



What's it
like to be
a giraffe?



You eat leaves and
fruits from tall
trees.



Your fur is
creamy-white
with big brown
dots.



Your hairy fur is black,
brown, grey or even white.



What's it
like to be
a monkey?

You live in
all tropical
forests in
the world.



You eat bananas, nuts and
leaves but also spiders and
insects.



illustrated by Laura Speer

by Margarete Lazar



You have a black
and white fur.

illustrated by Laura Speer

by Margarete Lazar



What's
it like
to be a
panda?



You live in
the bamboo
forests of
China.



You eat bamboo
leaves all day.



You eat five to six kilos of fresh meat every day.

illustrated by Laura Speer



by Margarete Lazar

What's it like to be a tiger?



Your home is in the jungles of
Asia.

illustrated by Laura Speer



by Margarete Lazar

Your fur
is orange-
brown and
has black
stripes.